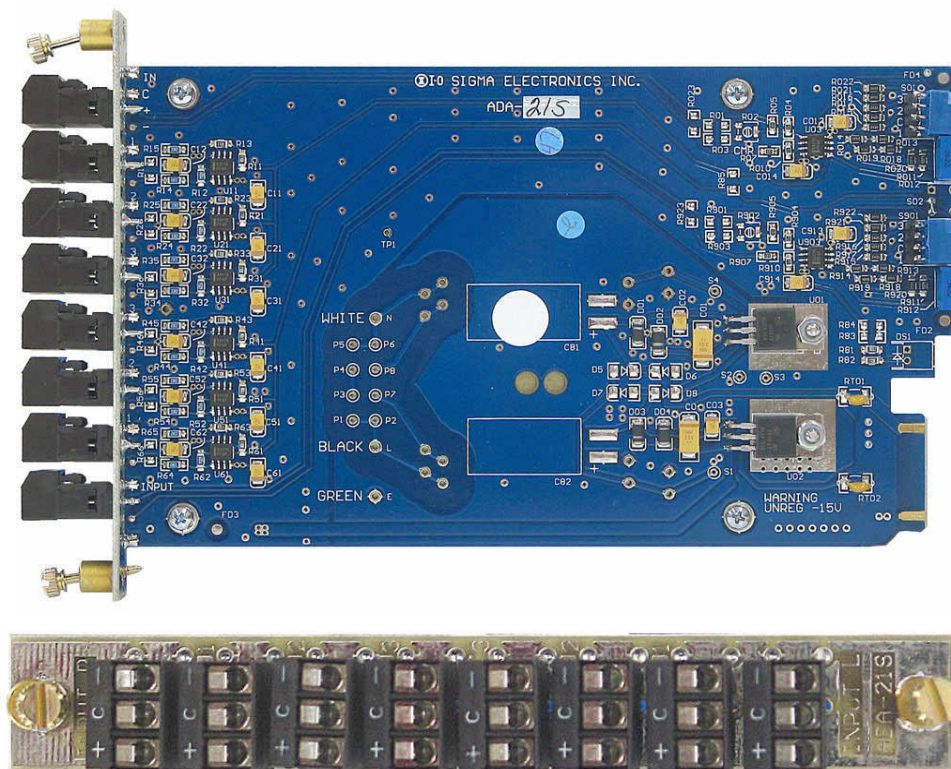


DUAL 1X3 HIGH PERFORMANCE ANALOG STEREO AUDIO DA - ADA21S



FEATURES

- High Performance, Low Cost
- Dual 1x3 Input/Output
- Balanced Stereo Audio
- 1 slot 2100 series module

SPECIFICATIONS

INPUTS

Two (2) channels, Balanced, Hi Z

Level	+24 dBm, max.
CMR	-70 dB 20-10kHz
	-60 dB 10k-20kHz
Impedance	30 kΩ
Gain Range	-9 to +27dB
Connectors	Pluggable Terminals

OUTPUTS

Three (3) per channel, Balanced

Bandwidth	150 kHz
THD & Noise	< 0.05%, 20 Hz to 20 kHz
Hum & Noise	< -80 dBm @ unity
Level	24 dBm, maximum
Freq. Response	±0.2 dB to 100 kHz
Channel Separation	>80 dB to 20 kHz
Impedance	100Ω

Prices and Specifications are subject to change without notice.